

# SYNERGY LAND



WHITEPAPER BY SYNERGY  
GAMES



UNREAL  
ENGINE

# THE GAME

**Synergy Land** is a web3 multiplayer game integrating MOBA mechanics into an aRPG genre, set in a fantasy world divided into **four ecosystems: earth, water, fire and ice.**



The player will take on the role of **of a hero**, exploring dungeons and undertaking a great adventure against very powerful creatures, using a **dynamic skill system** that will allow players to combine spells creating synergies between them.

**Inspired by** popular games, such as **Diablo and Path Of Exile**, the game aims to combine the **best of these worlds** where **regular and hardcore players will enjoy** the gameplay experience as well as an ecosystem for players who want to collect and trade NFTs, giving the community true **ownership of digital assets.**

## Main Features

- **Multiplayer** aRPG
- **4 amazing biomes** with environments that will define your path
- Dungeons, puzzles and **exciting boss fights**
- Find the best **weapons and equipment**
- **Private island** for Farming, Crafting, Cooking and more
- Grow, train and breed **pet companions**
- Real time **PVP** arenas
- Turn based PVP **pet battles**



<https://synergyland.live>  
[hi@synergygames.es](mailto:hi@synergygames.es)



# SYNERGY GAMES

## Who we are

**Synergy Games** is a game development studio established by **professionals** with more than **16 years of experience** in the video game industry

We have **worked for** companies such as **Ubisoft, 2K Games, MercurySteam, Ilion Studios, Konami, Nintendo, Riot Games** and many more

IPs such as **Assassin Creed, Metroid, Castlevania Lords of Shadow, Warhammer Vermintide, Ghost Recon, Mafia III, Commandos** and more

**We bring** many years of experience in **AAA games into the blockchain** space, creating **a new way to play games, giving the** community with a way to earn money while **enjoying their favorite game**

## Our Core Values

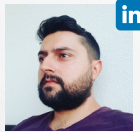
- **Synergy is critical** when creating a workplace, key to a **diverse and inclusive team**, and is the fundamental principle behind our **player-driven approach**
- We are **transparent and honest** at the highest possible level. Together we make smarter and more creative decisions
- We have a **clear vision** of the games we want to do. Creating a great game is based on **transparency, honesty, and mutual respect**
- We will solve our problems through thoughtful, logical and reasonable discussions.



# TEAM



**Carlos Bolaños**  
CEO  
CO-FOUNDER



**Óscar Soler**  
Game Director  
CO-FOUNDER



**Jordi Esturi**  
CMO



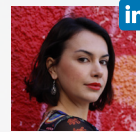
**Vanesa Sierra**  
Finance Director



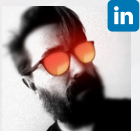
**Cristina Muro**  
Senior Producer



**Janine Murie**  
Lead Blockchain  
Developer



**Sherezade Atiénzar**  
Community Manager



**Luis Miguel Durán**  
Lead Environment  
Artist



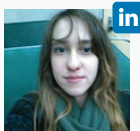
**Fernando González**  
Environment Artist



**Jordi Gorriz**  
Environment Artist



**Mauro Fanelli**  
Senior Concept  
Artist



**Tatiana Pirogovsky**  
Concept Artist



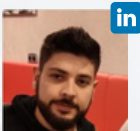
**Ricardo Hortigüela**  
Concept Artist



**Verónica Rubio**  
3D Character Artist



**Cristian Osorno**  
Technical Artist



**Alex Bolaños**  
Technical Artist



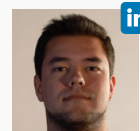
**Mario Antoñanzas**  
Senior Animator



**Indira Durán**  
Animator



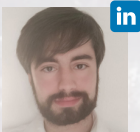
**David Cervera**  
Senior Game  
Programmer



**Carlos Díez**  
Senior Game  
Programmer



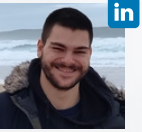
**Alfred Barbero**  
Game Programmer



**Roberto Gómez**  
Game Programmer



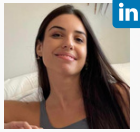
**Javier Hernández**  
Game Designer



**Ulises Rosado**  
Game Designer



**Juan Pedro**  
Game Designer



**Claudia Torrente**  
Audio Designer



<https://synergyland.live>

[hi@synergygames.es](mailto:hi@synergygames.es)

# PLAYER EXPERIENCE

- **Explore four beautiful biomes**, each with different enemies that will require unique strategies to defeat them
- **Create and customize** your character with over a hundred spells, feats, and abilities to suit your personal play style
- **Discover skill synergies** and work together with your friends as it will be key to successfully finish a dungeon
- **Dungeon randomization** will ensure new layouts, paths, and loot every time you play
- **Fight** your way through all kinds of enemies and challenging bosses and collect the loot they are guarding
- **Configure your dungeon** with several modes of difficulty, loot, perks, etc.
- **Solve puzzles** and riddles to unlock new areas inside the dungeons
- **Farming, Crafting, Cooking** and many more life skills
- Grow, train and breed **pet companions**



# FEATURE OVERVIEW

- **A fully immersive 3D aRPG** world with a large space to explore
- **Captivating dungeons** to face all kinds of enemies for a chance to get powerful & rare items
- **Wide variety of classes and customizations** for different gameplay styles
- **Own NFT bosses**, customize and boost them in exchange for rewards
- **PvP events** that will reward players for their performance each season
- **Dungeon puzzles** to access inaccessible locations and chests with rare items
- **Collect and breed pets** that will battle alongside you and participate in pet battles with a possibility to earn unique rewards
- **Own a private island** and make it your home and business
- **Build crafting stations** and create powerful items



# Player Vs Player



## HEROES

- **Conquer the arena** in explosive battles with a real-time non-targeting combat system
- **Choose your hero** and your pet and join with **friends or solo** mode
- **Master your skills** and coordinate with your teammates to discover new abilities and **powerful synergies**
- **Earn prizes** by ranking among the best

## PETS

- Compete in **turn-based RPG-style** battle
- **Unique set of abilities** for each pet
- **Master** their abilities and **combine** them to create **powerful synergies**
- **Earn prizes** by ranking among the best

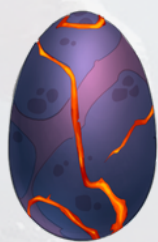


# BREEDING PETS



- The breeding process will **produce eggs** by bringing **two compatible pets together**.
- The eggs will inherit the **properties of the parents**, although this process **can be manipulated**, using certain items that will be available at the game store, drops from bosses & chests.
- The compatibility will be **based on its birth biome** and each pet will have a certain number of breeds, limiting the times a pet can be bred.

- Once the egg has hatched, this pet **has to be trained** to reach its adult state and **get its skills**.
- These skills will be assigned **based on their element**.





# PRIVATE ISLAND



## HOUSING SYSTEM

Housing in Synergy Land is based on **owning a private island**.

Islands are an instanced zone permanently bound to the biome where they were acquired.

The islands have many purposes: **building a house, crafting, farming, mining, breeding, gathering and the construction of production and crafting stations**.



## WORKERS

Workers play a critical role. They are the only ones capable of **crafting or obtaining resources** thanks to their great experience and knowledge of the biomes where they belong.

Owning a station blueprint will allow you to start the construction project on your private island. Once completed **you'll be able to place a worker on the station**.

Give the correct guidelines to the worker and the order will be taken satisfactorily.



# PRIVATE ISLAND

A key concept to understand the **production system** are the **private islands**.

The world of Synergy Land **consists of 4 biomes** and a private island represents **the property in a biome**. **Each island has several spaces to build** production and crafting stations.

Each production station will only **produce resources from the biome to which it belongs**, **incentivizing** players to buy other necessary resources from other players through the game **marketplace**.

**All stations** on the islands are subject to a **land tax**, which will be **paid monthly** with our in-game currency.



# STATIONS

Stations are needed to **craft and produce all sorts of items** and resources in Synergy Land.

**Each station** has a **specific size** and must be built in its **corresponding slot**.

A **specialized worker** will take care of the tasks that the player needs.

Players will have to think about their **trading strategy** and **choose between different stations** that will create unique opportunities. The biomes will create a business synergy of needs between the players.

**Some** of the most important **stations** are:

STATION	TYPE
Mining	Production
Farming	Production
Lumberjack	Production
Tanner	Production
Stonemason	Production
Sawmill	Crafting
Weaver	Crafting
Blacksmith	Crafting
Cook	Crafting
Smelter	Crafting
Alchemist	Crafting



# STATION OWNERS

## Station Level and Rarity

The **level of the station can be increased** by means of an improvement system, increasing the number of available blueprints and the speed of creation.

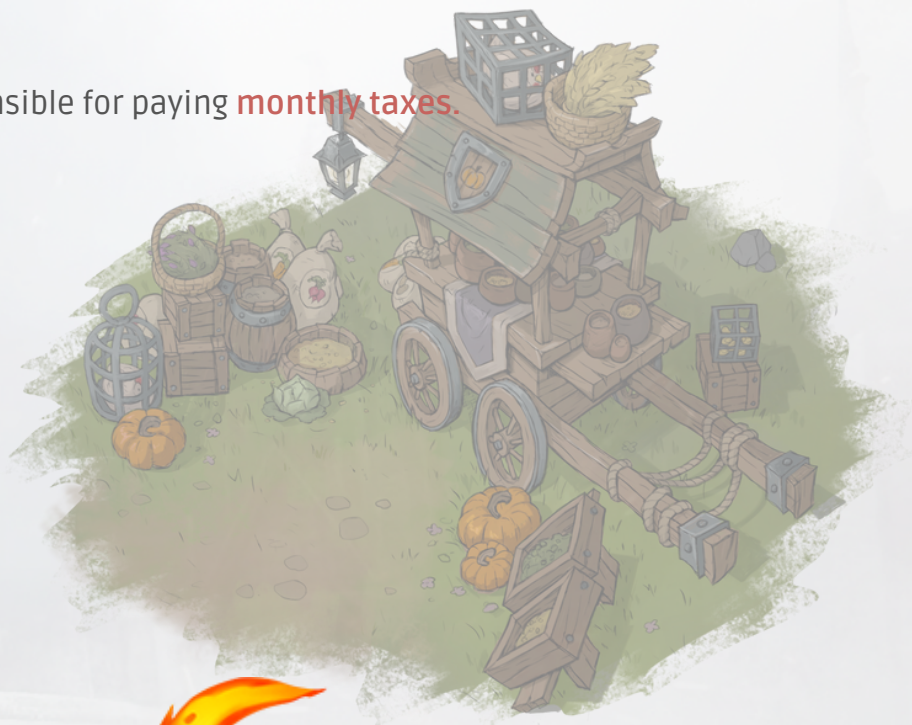
The rarity of the station cannot be increased, **the rarer the station the better the blueprints.**

## Marketplace Requests

In the marketplaces there will be a section where **players can list production or crafting requests** and station owners can accept them by charging a commission.

## Land Taxes

The owners will be responsible for paying **monthly taxes.**



# PLAYER-DRIVEN ECONOMY

Synergy Land is an **ARPG** that will challenge its players to **unite, organize, build, and fight** their way through uncharted territories.

The **goal of our economy** is to create **synergy between** the three most important activities:



These three features and a **solid monetization strategy** will create an economy with a strong long-term foundation.

The most **powerful items** of the game come from the **crafting** side, with the exception of very rare equipment that will come from loot at the dungeons, and an exclusive limited series of NFTs injected into the game through presales (such as characters, bosses, pets, and stations)

**Important:** We will never sell equipment and resources; they will be **fully player-driven**.



# EARLY ACCESS (Q2 2023)



Synergy Games will release an **Early Access** of Synergy Land in early Q2

## What is the Synergy Land: Early Access?

The purpose of releasing this version is to allow players to progress in managing the Private Island and **to be prepared for the Dungeons**

**Synergy Land Pets are key** to progress once we launch the dungeons, some of them will have abilities to facilitate **fight against bosses, solve puzzles, player support** and many more activities

This version will contain the **Life Skills of Synergy Land:**

- **Island Management**
- **Crafting Activities**
- **Farming Activities**
- **Production Activities**
- **Pet Management**
- **Pet Training**
- **Pet Breeding**
- **Pet Combats**
- **Expeditions**



All of this content is planned to be released in continuous updates



<https://synergyland.live>  
[hi@synergygames.es](mailto:hi@synergygames.es)

# BUSINESS MODEL

Synergy Land's business model currently focuses on several phases of NFT pre-sales:

- Synergians - NFT Profile Picture - Presale held on January 2022
- Synergian Badges - Presale held on August 2022
- Lands
- Characters
- Pets
- Houses & Furnitures
- Crafting Blueprints
- Station Blueprints
- Bosses



Browser minigames:

- **Crafting Station:** NFT Staking in order to get NFTs with in-game utility.
- **Synergian Tavern:** NFT Staking to perform quests related to game lore to earn nfts with in-game utility and a Season Pass system.

Once Synergy Land is released:

- We will collect fees from:
  - In-game marketplace transactions
  - Life Skills activities
  - Dungeons fees
- In-Game Purchases:
  - Collectibles
  - Consumables
  - ACN In-Game Currency
  - Season Pass System



<https://synergyland.live>  
[hi@synergygames.es](mailto:hi@synergygames.es)

# MARKETPLACE

Synergy Land will host a **marketplace**. It will be crucial part of the gaming ecosystem.

## Marketplace

Where players will be able to trade items.

## Synergy Vendor

Where players will be able to buy basic resources required for life skills progress.





# NFTS

We have **different NFTs** such as **Characters, Bosses, Pets, Equipment, Crafting Blueprints, Station Blueprints** and **Furnitures**.

Characters, Bosses, Pets and Station Blueprints are **exclusive and limited series** of NFTs that will be injected into the game **through pre-sales**.

**Pets, Station Blueprints and Crafting Blueprints** will also be **obtained through dungeon loot** with a very low drop rate.

**Equipment** will only be obtained through dungeon loot or can be **crafted in stations**.

	Loot	Crafting	Presale
Characters	✗	✗	✓
Bosses	✗	✗	✓
Pets	✓	✓	✓
Equipment	✓	✓	✗
Crafting Blueprints	✓	✗	✓
Station Blueprints	✓	✗	✓
Houses & Furnitures	✓	✓	✓

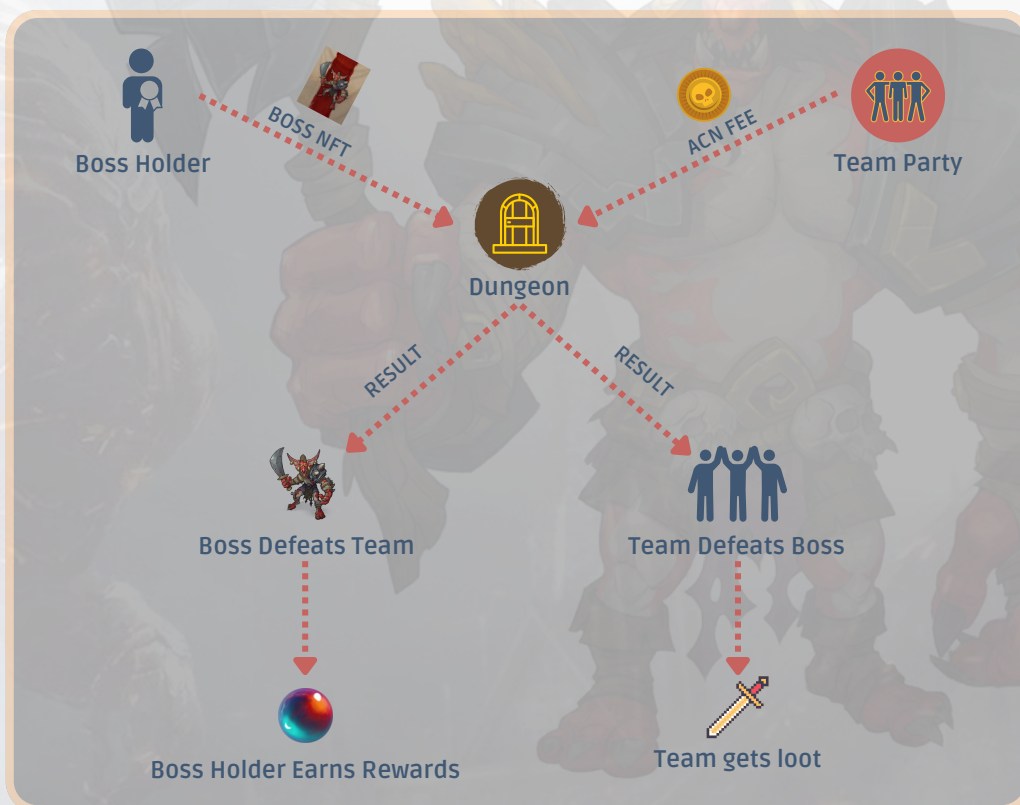


# SYNERGIAN NFT BOSSES

The mechanics behind this feature is that **the community owns the most powerful enemies in the game**, giving the holder the option to stake it and, in case an NFT boss defeats the team, **the holder earns a passive income**.

A system created to reward holders and also to own **unique NFTs**.

The holders of these unique NFTs will have access to our **exclusive dashboard to customize and boost their bosses**.



# SYNERGIANS

## Profile Picture NFT

- **NFT Airdrops (Lands, Characters, Pets, Mint Passes, etc)**
  - Every NFT sale in the Synergy Land ecosystem will include a number of NFTs randomly distributed to Synergian holders!
- **Exclusive Game NFT Artwork (2D & 3D Art)**
  - As the game environment evolves, we'll periodically drop NFT Artwork exclusively to Synergian holders!
- **In-game Skin of your Synergian**
  - 3D in-game skin of your Synergian with unique cosmetic attributes and only 8,000 of them in the entire game ecosystem!
- **In-game 3D Item Frame**
  - Show off your Synergian as an art piece on your own private island! Own more than one? The canvas will change every few seconds to display them all!
- **Early Beta Access**
  - Gain access to exclusive Beta features before anyone else (Date of beta release is yet to be determined)
- **Exclusive Discord Role**
  - Flex your exclusive "Synergian" role on our official Discord and show your support for the project!

Apart from the benefits explained above, we have many ideas for our Synergians, since they are our GENESIS NFTs in the Blockchain and the visual presentation of Synergy Land in social networks.



# SYNERGIAN BADGE



## ➤ SNG Token

- Each tokenized badge includes an amount of tokens priced at the Public Sale Round (ea. 0.18 \$)

## ➤ Minting of equal rarity in the Synergy Land character presale

- Badge holders will be able to redeem the badge for a character of equal rarity

## ➤ Mint Pass Ability

- Badge holders have priority mint rights when Synergy Land NFTs are released.

## ➤ Staking APR Boost

- Each badge has a multiplier, when you stake SNG, you will be able to stake your badge, multiplying your base pool APR by the badge multiplier
- Each wallet will be able to stake up to 3 badges

## ➤ Community Perks

- In-Game Badge: Flex a Synergian Badge in-game
- Discord Role: Exclusive Role on our Discord server



<https://synergyland.live>

[hi@synergygames.es](mailto:hi@synergygames.es)

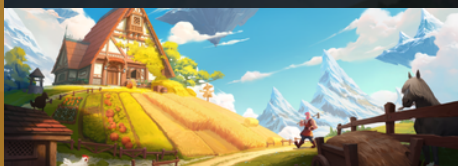
# ROADMAP 2022-2023

## Q3/Q4 2022



- Synergy Land: [Demo](#)
- Synergian Badge Sale
- Synergy Land 1st Anniversary
- Synergian Crafting Station
- Synergian Tavern Platform

## Q1/Q2 2023



- Token SNG Release (Q1)
- SNG Staking Platform (Q1)
- SNG Farming Platform (Q2)
- Land Sale (Q1)
- Synergy Land: [Early Access](#)
  - Furya (Q2)

## Q3/Q4 2023



- Synergy Land: [Early Access](#)
  - Tseanami (Q3)
- Boss Sale (Q4)
- Synergy Land
  - Dungeons (Q4)



<https://synergyland.live>  
[hi@synergygames.es](mailto:hi@synergygames.es)

# SOCIAL NETWORKS



**Website**



**Discord**



**Instagram**



**Twitter**



**Medium**



**Youtube**



# DISCLAIMER

## Nature of the Whitepaper

The Whitepaper and the Website are intended for general informational purposes only and do not constitute a prospectus, an offer document, an offer of securities, a solicitation for investment, or any offer to sell any product, item or asset (whether digital or otherwise).

The information herein may not be exhaustive and does not imply any element of a contractual relationship. There is no assurance as to the accuracy or completeness of such information and no representation, warranty or undertaking is or purported to be provided as to the accuracy or completeness of such information.

Where the Whitepaper or the Website includes information that has been obtained from third party sources, the Company, the Distributor, their respective affiliates and/or the Synergy Games team have not independently verified the accuracy or completion of such information. Further, you acknowledge that circumstances may change and that the Whitepaper or the Website may become outdated as a result; and neither the Company nor the Distributor is under any obligation to update or correct this document in connection therewith.

Any terminology used in this document is intended only as a basic reference, without any effective or legal meaning of the same terms in a financial environment, and/or any other regulated framework including e-gaming and/or gambling and betting.

Synergy Land token SNG is strictly a utility token in any jurisdiction and is not and can not be considered as a security or otherwise a regulated token of any kind, is not in any way fiat or asset backed stablecoin, whether global or limited in scope.

Any reader of this document expressly declares to have received appropriate technical, administrative and legal advice before and after reading this document and accepts that there is an inherent high risk in acquiring or using any kind of blockchain and/or crypto or digital token, platform, software or interface and acknowledges with full disclaimer for any of the persons or entities mentioned within this whitepaper or in any way directly or indirectly connected to the Synergy Land project, that there can be any kind of damage suffered, including total loss.

Synergy Games may update, modify or correct this document without prior notice.

